

# Elle – So Much Better (m. 87 – 123)

**BEGIN**

84 85 86 87

— Oo, wait! where's my cell?— Mom will fall on the floor...— Hey, Mom! Look at my name

Ah, Ah, Ah, Ah! Hey, Mom! Look at my name

Ah, Ah, Ah, Ah! Hey, Mom! Look at my name

88

89 90 91

— in black and white!— Your daugh-ter's do in' some - thin' right!— And

— in black and white!— Your daugh-ter's do - in' some - thin', some - thin', right!

— in black and white!— Your daugh-ter's do - in' some thin', some thin' right!

(ELLE)

92 93

I feel so much bet - ter... I'll be there on Mon -

(GREEK CHORUS)

I feel so much bet - ter... I'll be there on Mon -

I feel so much bet - ter... I'll be there on Mon -

95 96 97

- day, nine o-'clock, Then we will see who walks the walk. No, no, I can't wait!

- day, nine o-'clock, Then we will see who walks the walk.

- day nine o-'clock Then we will see who walks the walk.

98 99 100 101

I will be there at eight! When they un-lock the door... Oh! Oh! I'll e-ven DRESS

Ah... Oh! Oh! I'll e-ven DRESS

Ah... Oh! Oh! I'll e-ven DRESS

103 104 105

in black and white! See, I have not be-gun to fight! And you'll go..

(GREEK CHORUS)

in black and white! See, I have not be-gun to fight! WHOAI

in black and white! See, I have not be-gun to fight! WHOAI

106 107 108 109

"Much bet-ter!" "Much bet ter!" And soon... all y'all gon-na know!... That

— Hel-LO!... And soon... all y'all gon-na know!... Much bet-ter!

— Hel-LO!... And soon... all y'all gon-na know!... Much bet-ter!

110 111 112 113

I am so much bet - ter... I am so much bet - ter, —

I am so much bet - ter... I am so much!

I am so much bet - ter... I am so much!

(ELLE)  
114 115 116

I am so Much bet - ter... Than be - fore!

(GREEK CHORUS)

I am so Much bet - ter...

I am so Much bet - ter...

117

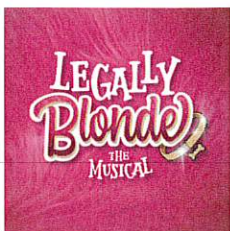
Musical staff with measures 118, 119, and 120. The staff contains a single melodic line with a treble clef and a key signature of one flat. Measure 118 contains a half note G4, measure 119 contains a half note A4, and measure 120 contains a half note B4.

**CHORUS:**

Musical staff for the chorus with lyrics "Ahl". The staff contains a melodic line with a treble clef and a key signature of one flat. The melody is: G4 (quarter), A4 (quarter), B4 (quarter), A4-G4 (beamed eighth notes), F4 (quarter), E4 (quarter), D4 (quarter), C4 (quarter). The word "Ahl" is written below the first four notes. The staff continues with a similar melodic pattern for the second half of the chorus.

Musical staff with measures 121, 122, and 123. The staff contains a single melodic line with a treble clef and a key signature of one flat. Measure 121 contains a half note G4, measure 122 contains a half note A4, and measure 123 contains a half note B4.

Musical staff for the chorus with lyrics "AHL". The staff contains a melodic line with a treble clef and a key signature of one flat. The melody is: G4 (quarter), A4 (quarter), B4 (quarter), A4-G4 (beamed eighth notes), F4 (quarter), E4 (quarter), D4 (quarter), C4 (quarter). The word "AHL" is written below the first four notes. The staff continues with a similar melodic pattern for the second half of the chorus.



## Elle – Scene 1

WARNER

ELLE?!

ELLE

Hmmm? Oh... migod, Warner! That's so weird, I totally forgot you go here!

WARNER

What are you doing here?

ELLE

I go here.

WARNER

You got in to Harvard?

ELLE

What? Like it's hard?

EMMETT

I think this is yours.

*(reading)*

Woods, comma, Elle...

ELLE

Is this my social agenda?

EMMETT

No, your academic roster.

ELLE

Right. There's that.

*(to WARNER)*

Let's totally catch up after class.

EMMETT

Who is she?

WARNER

My ex-girlfriend.

*ELLE is about to take a seat in the front row.*

*VIVIENNE KENSINGTON sees her. If anyone ever personified the tasteful Brooks Brothers blueblood, it's VIVIENNE.*

VIVIENNE

All that pink you're wearing. Is that even legal?

ELLE

Pink's my signature color.